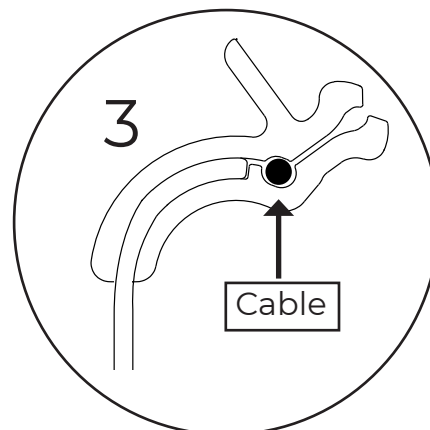
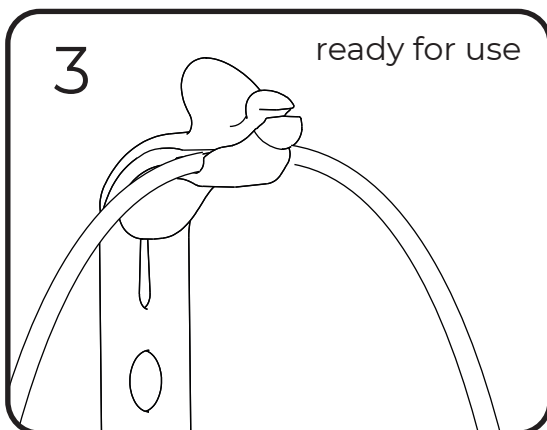
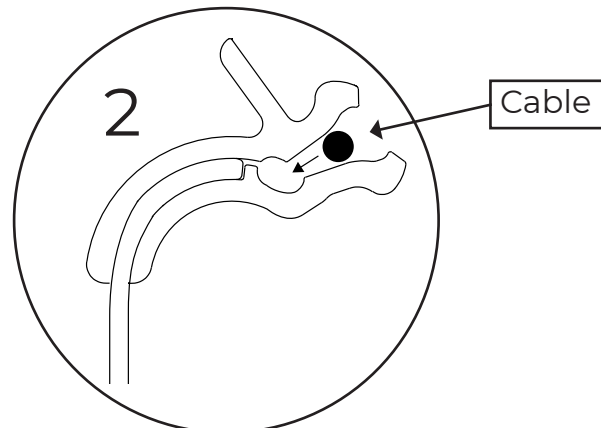
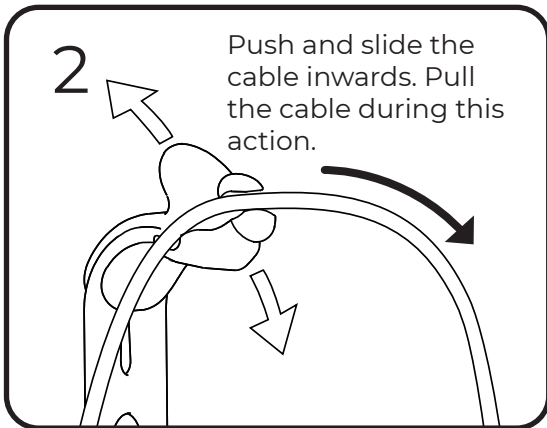
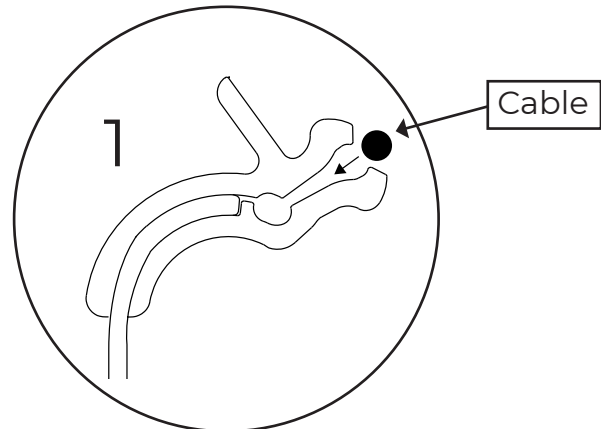
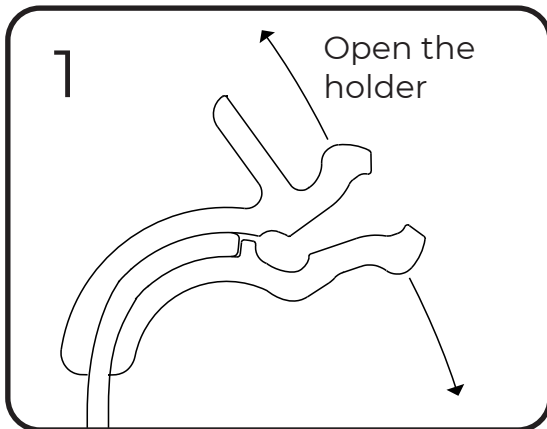


Installation



1. Open the holder
2. Push and slide the cable inwards. Pull the cable during this action.
3. Check if the cable is installed correctly

This installation process only occurs once.
After the sudl holder is installed it becomes a part of the call system and remains attached to the cable.

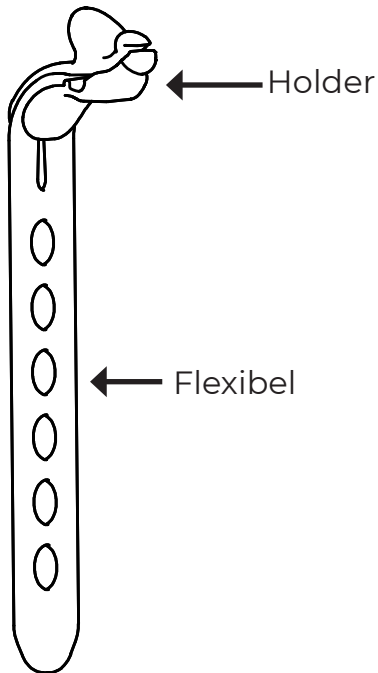


Installation

www.sudl.eu

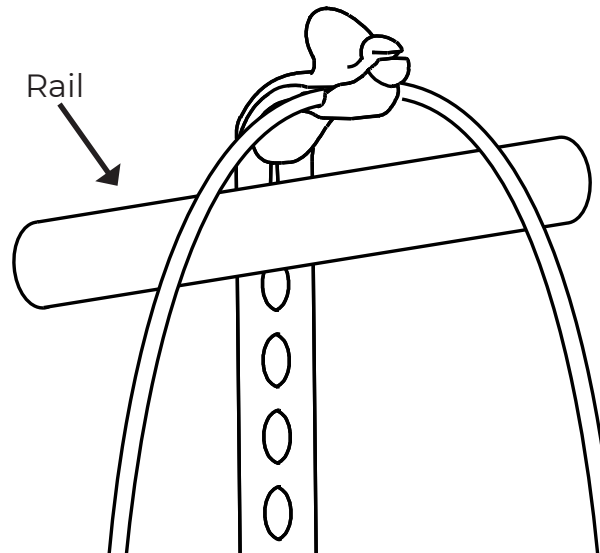
Info@sudl.eu

Info



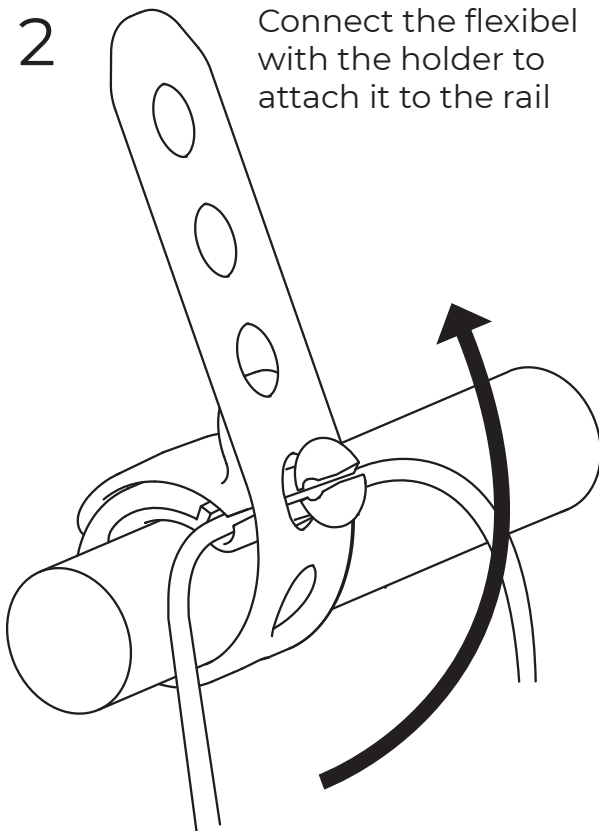
1

Place the holder (with cable) over the rail



2

Connect the flexibel with the holder to attach it to the rail



3

Push the cable in the holder if needed. This keeps the device in sight and reach. It can be attached and removed easily

